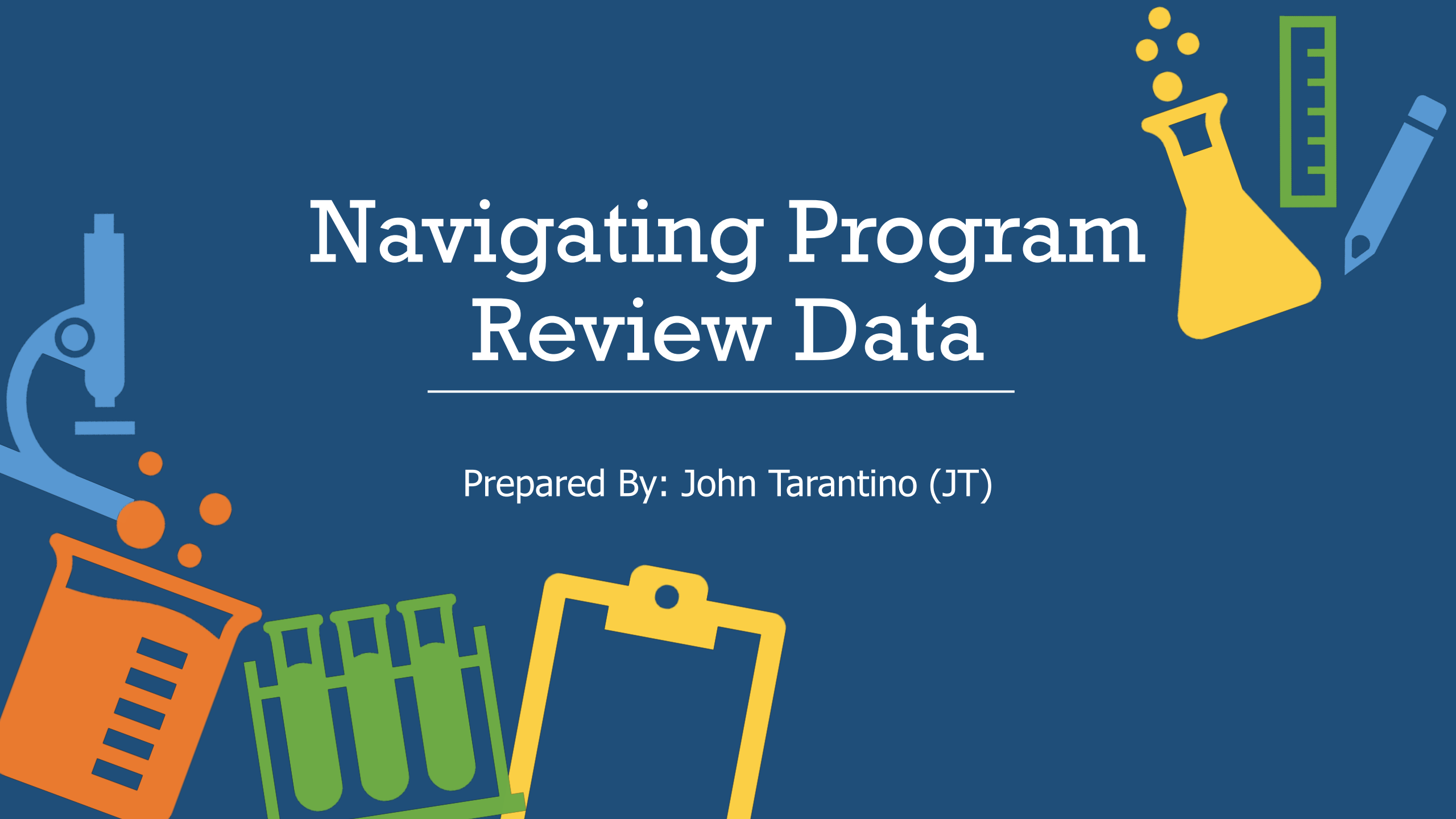


Navigating Program Review Data

Prepared By: John Tarantino (JT)



Brief Overview of Tabs

- 1.) Retention
- 2.) Success
- 3.) *Student CRN Data (DNU)*
- 4.) High School
- 5.) Race
- 6.) Gender
- 7.) *Student Only Data (DNU)*
- 8.) Enrollment
- 9.) Assignment Type
- 10.) Modality
- 11.) *CRN Only Data (DNU)*
- 12.) Credit Status
- 13.) *Course Only Data (DNU)*
- 14.) FTES
- 15.) Awards



Retention and Success

Retention: Retention rates by Term and Subj-CourseNumber

- Retention is defined as any course grade that is not a “W” or “FW”
- Grades “AU” and ungraded courses are excluded

Success: Success rates by Term and Subj-CourseNumber

- Student is successful with the following grades: “A”, “B”, “C”, “I”, “IP”, “P”, “S”
- Grades “AU” and ungraded courses are excluded

Default parameters:

- Course Term
- Course Subject
- Course Number



Pivot Table Tips

Row Labels	Count of Student_Race		Row Labels	Count of Student_Race
FIRE	1672	Show Detail	FIRE	1672
African American	22	Choose the field containing	⊕ African American	22
American Indian/Alaskan Native	31	PR_ID	⊕ American Indian/Alaskan Native	31
Asian	21	Student_Status	⊕ Asian	21
Filipino	2	Student_High_School	⊕ Filipino	2
Hispanic	93	Student_Gender	⊖ Hispanic	93
Native Hawaiian/Pacific Islander	1	Course_Term	201470	6
Other/Unknown	153	PR_SUBJECT_ID	201530	18
Two or more	100	Course_Number	201550	1
White	1249	Course_CRN	201570	3
Grand Total	1672		201630	18
			201650	1
			201670	2
			201730	17
			201750	3
			201770	9
			201810	2
			201830	13
			⊕ Native Hawaiian/Pacific Islander	1
			⊕ Other/Unknown	153
			⊕ Two or more	100
			⊕ White	1249
			Grand Total	1672

- Double click on a row to get more information if needed.



High School / Race / Gender

High School: High school frequency by unduplicated student headcount

- Large quantities of missing data
- For further info on area high schools (<https://www.ed-data.org>)

Race: Race frequency by unduplicated student headcount

Gender: Gender frequency by unduplicated student headcount.

Default parameters:

- Course Subject
- High School or Race or Gender



Enrollments / Assignment Type

Enrollments:

- The census count represents enrollment numbers as of the first census for a course, regardless of calendar date.
- The enrollment numbers represent an aggregation of all sections taught for a given course.

Assignment Type:

- This table reads from the information attached to a given section about the position of the primary instructor. If this is missing or there was no instructor recorded in this form, the value "Undefined / Unknown" is provided.



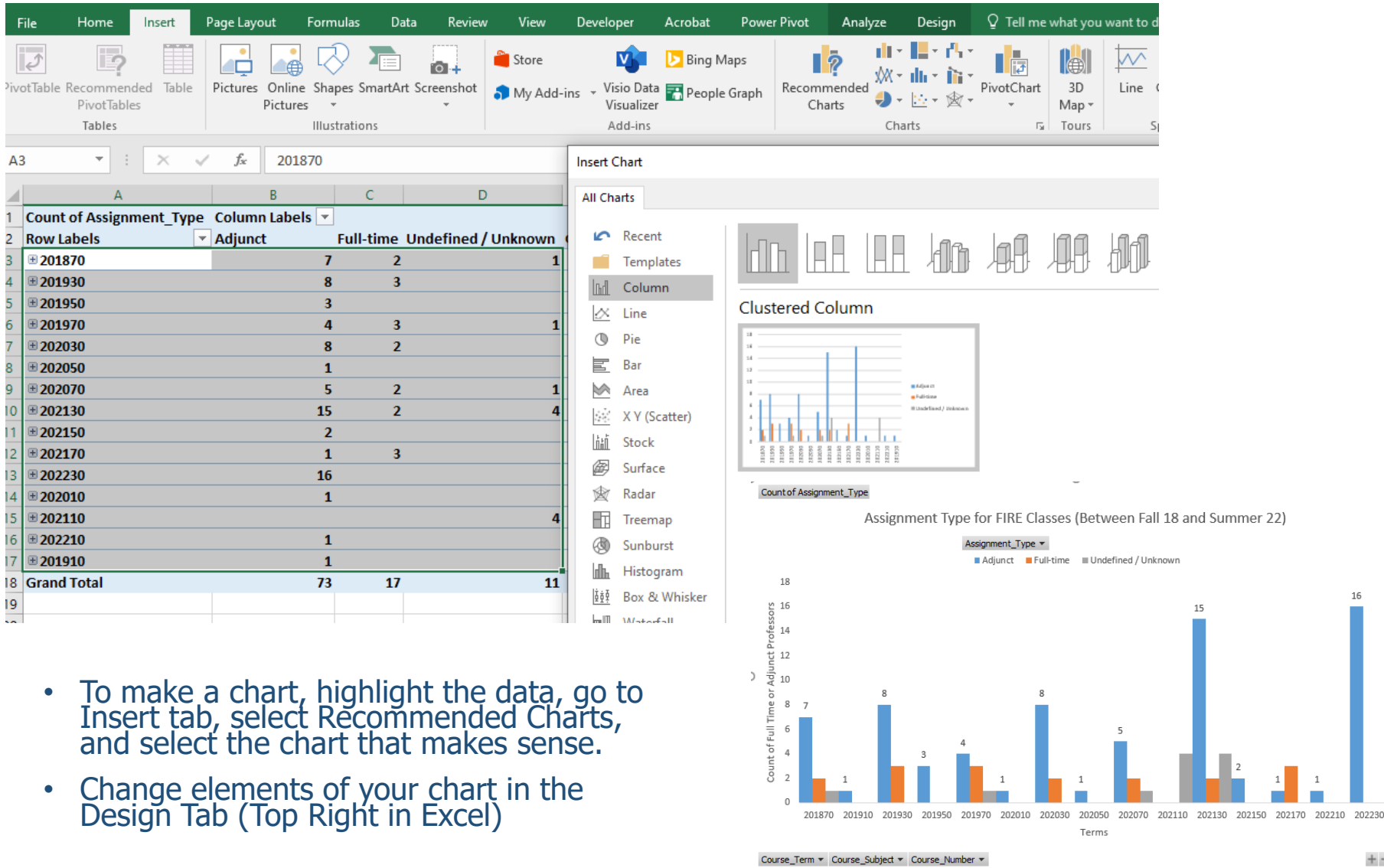
Navigating Through Excel

- Term Codes:
 - 10 = Winter
 - 30 = Spring
 - 50 = Summer
 - 70 = Fall

Count of Modality	Column Labels	Evening	Weekend	Grand Total	
201470	Day	12	2	14	
201530	Day	26	1	6	33
201550	Day	3	2	5	7
201670	Day	6	6	15	22
201670	Day	9	3	3	10
201670	Day	8	1	1	2
201670	Day	1	1	2	12
201670	Day	11	1	12	132
201670	Day	100	2	30	132



Making a Chart in Excel



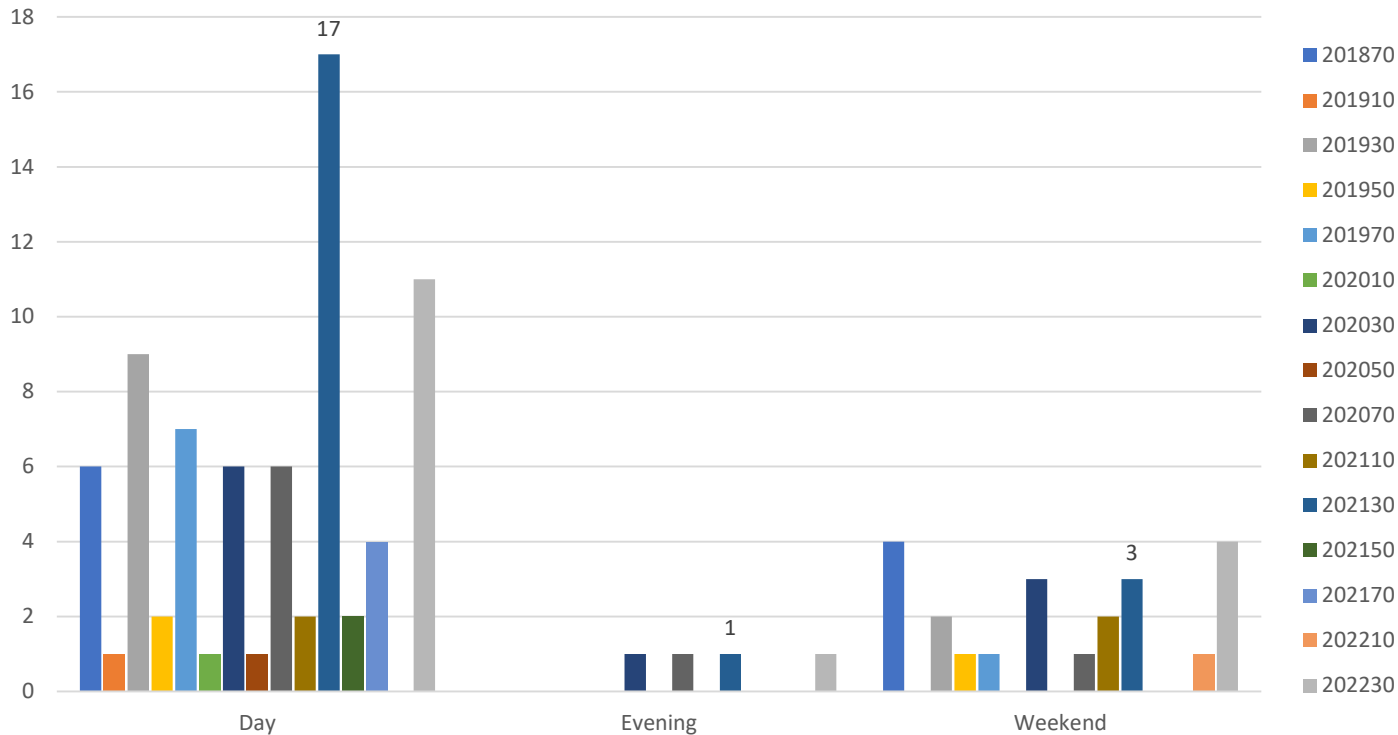
- To make a chart, highlight the data, go to Insert tab, select Recommended Charts, and select the chart that makes sense.
- Change elements of your chart in the Design Tab (Top Right in Excel)



Modality

- The Office of Research is unable to disaggregate in the Program Review Data Report which CRN of a video-conferenced course is the section where the professor was physically present during lecture. Please consult with the Office of Instruction and your personal records should this distinction be needed.

Modality of Fire Classes: Terms Fall 18 - Spring 22



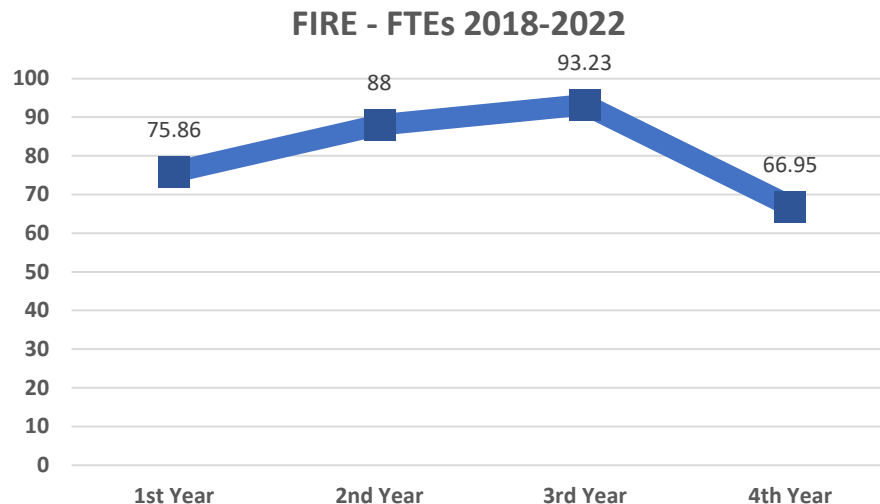
Credit Status / FTEs (estimated)

Credit Status

- The Office of Research is unable to disaggregate transferable classes from non-transferable classes, though in many cases the “Credit Degree-Applicable” vs. “Credit Non-Degree-Applicable” will typically track with each other.

FTEs

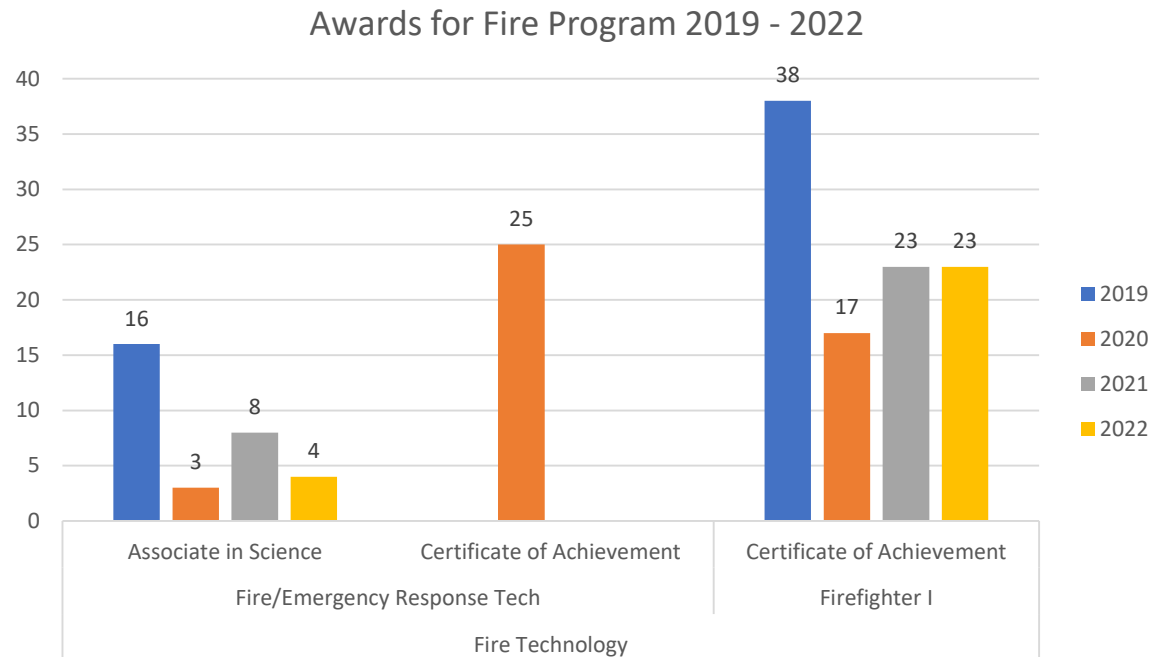
- This FTES metric is derived from all activity in courses eligible for apportionment. Thus the reported amounts are not perfectly correlated with apportionment funding.
- As a general rule of thumb when trying to conceptualize the link between headcounts and FTES, 10 students in a 3-unit class is functionally equivalent to one FTES (which is defined as a student taking 15 units in both major terms).



Awards

Awards

- We are not able to distinguish between different types of certificate of achievement.
- Summer is a leading term when determining awards. For example, a student awarded a certificate in Summer 2015 is credited in the 2016 academic year.



Zogotech Preview for PR

Enrollments | Retention/Success | High School | Race | Gender | Instructional Mode | Awarded Degrees

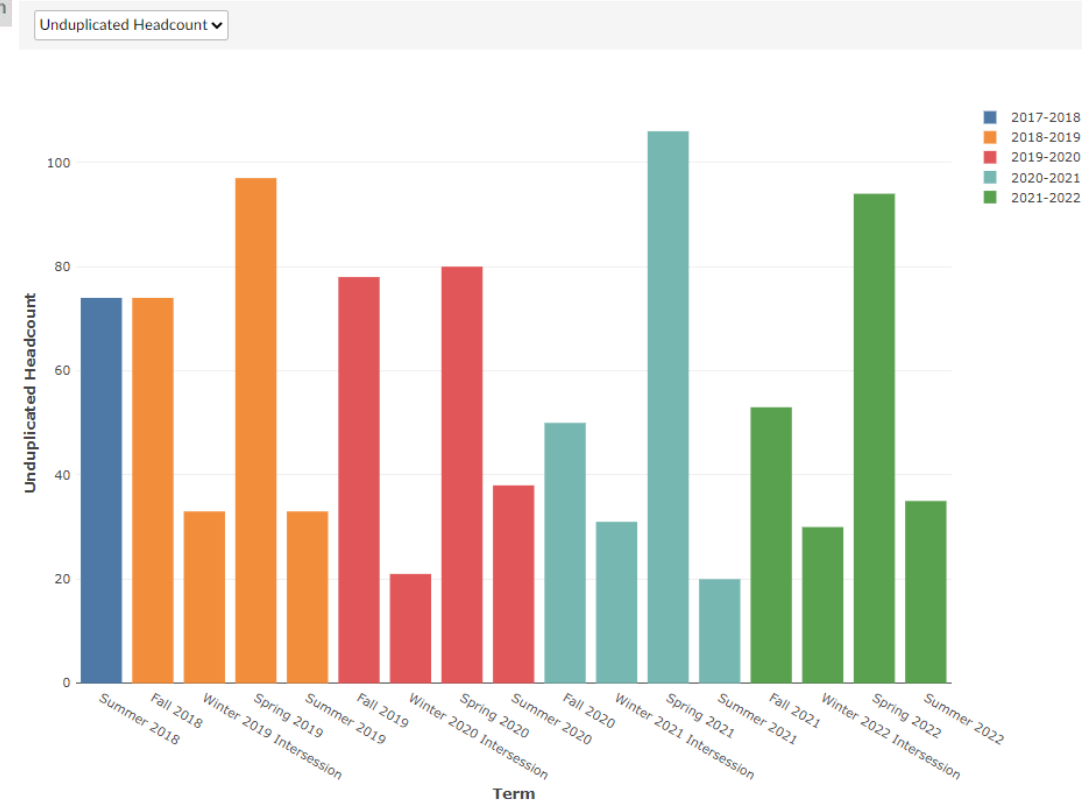
Tab Filters Major is in list (Fire Officer ... Wildland Fire Fighter)

Fire PR Enrollments

Report Filters Academic Level is in list (Credit, Non Credit) | Enrolled is Yes | Term

Enrolled /	Term	Unduplicated Headcount	Duplicated Headcount
Yes	Summer 2018	74	158
	Fall 2018	74	158
	Winter 2019 Intersession	33	34
	Spring 2019	97	203
	Summer 2019	33	37
	Fall 2019	78	184
	Winter 2020 Intersession	21	22
	Spring 2020	80	150
	Summer 2020	38	42
	Fall 2020	50	119
	Winter 2021 Intersession	31	33
	Spring 2021	106	243
	Summer 2021	20	24
	Fall 2021	53	148
	Winter 2022 Intersession	30	33
	Spring 2022	94	210
	Summer 2022	35	43
	Total	465	1,841
Grand Total		465	1,841

Report Filters Academic Level is in list (Credit, Non Credit) | Enrolled is Yes | Term is in list (Summer 2018 ... Summer 2022)



Live Demo: <https://zogotech.siskiyous.edu/adhoc/view/12>



Zogotech Preview for PR

★ Master Program Review Dashboard

Description Tags Filters Definitions

Use the tab filters: Subject or Major to specify your targeted interest.

Dashboard Filters Major: All

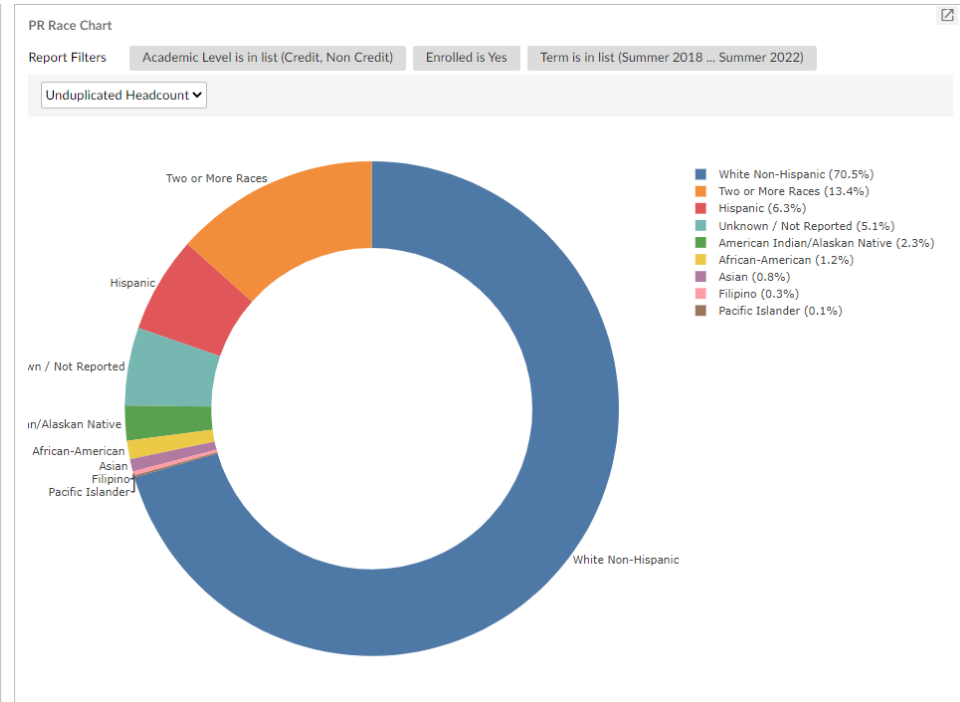
Enrollments Retention/Success High School **Race** Gender Instructional Mode Campus Awarded Degrees

Tab Filters Subject is FIRE

PR Race

Report Filters Academic Level is in list (Credit, Non Credit) Enrolled is Yes Term is in list (Summer 2018 ... Summer 2022)

Ethnicity /	Term / Subject and Course Number	Unduplicated Headcount	Duplicated Headcount
African-American		9	19
American Indian/Alaskan Native		17	32
Asian		6	11
Filipino		2	2
Hispanic		47	113
Pacific Islander		1	1
Two or More Races		100	311
Unknown / Not Reported		38	58
White Non-Hispanic		526	1,160
Grand Total		746	1,707



Demonstration Questions

How Can I Help You?

