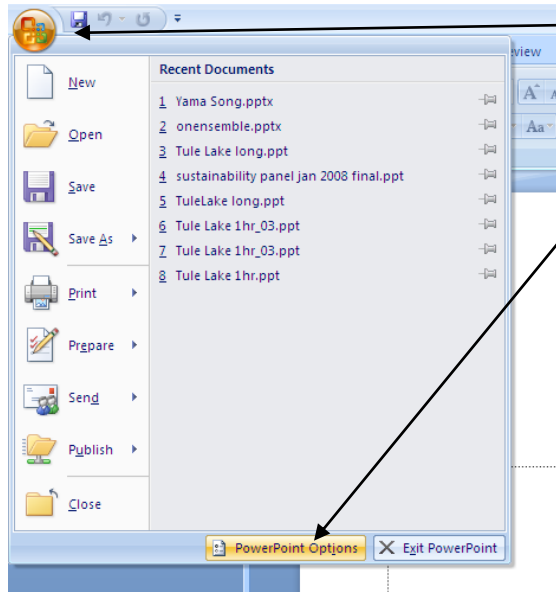


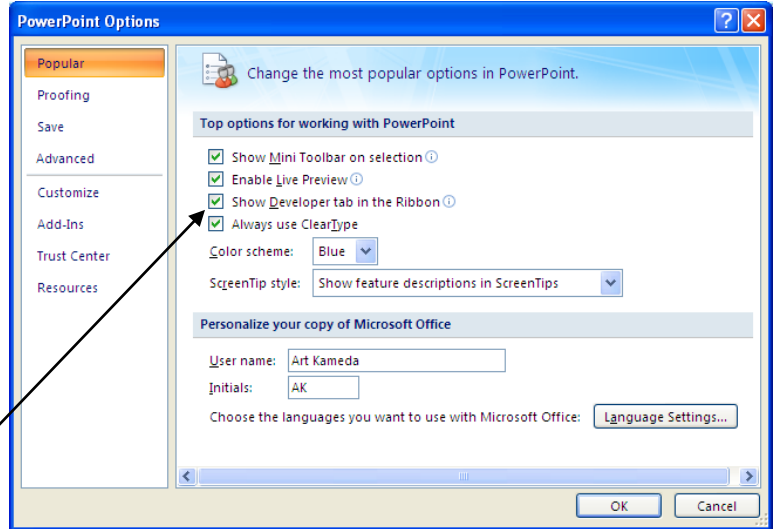
Inserting A YouTube Video into PowerPoint

Open PowerPoint



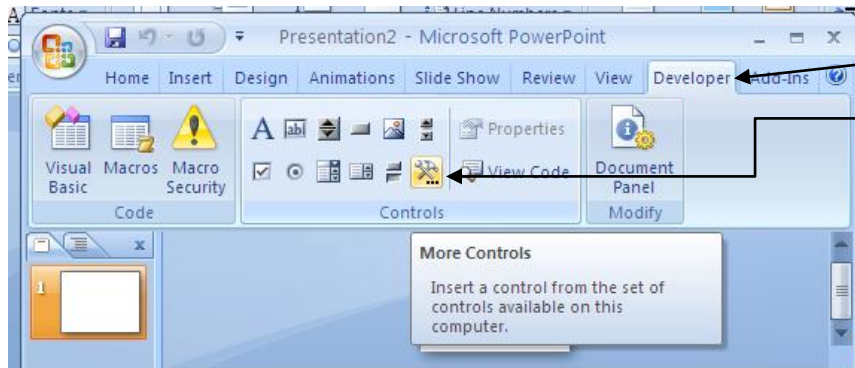
Click on the **Office Button** in left-hand corner of PowerPoint

Click **PowerPoint Options** button



Put checkmark next to **Show Developer tab in the Ribbon**

Click **OK**

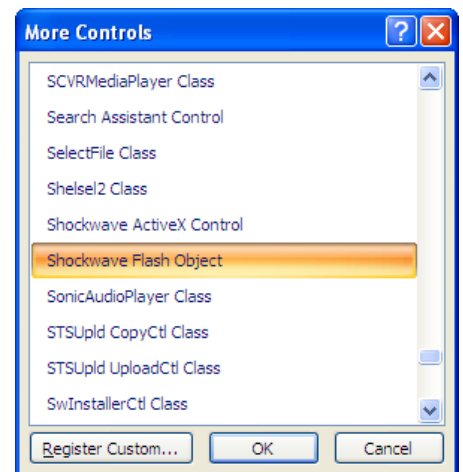


Under the **Developer Tab**,

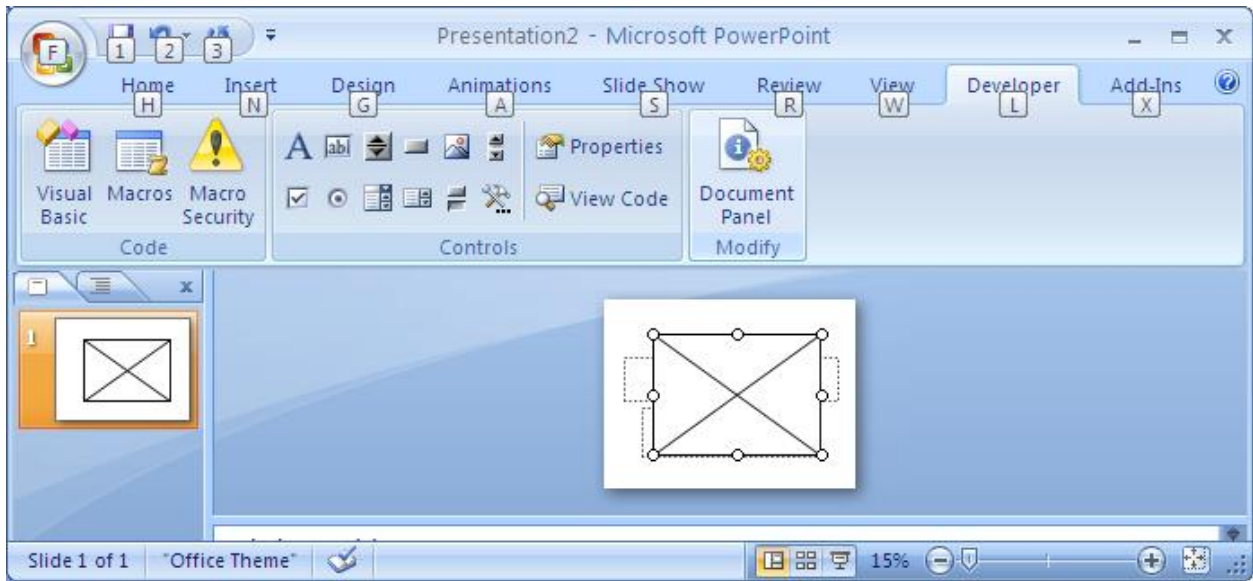
Click the **More Controls** icon

In the **More Controls** window, scroll down and choose Shockwave Flash Object

Click **OK**

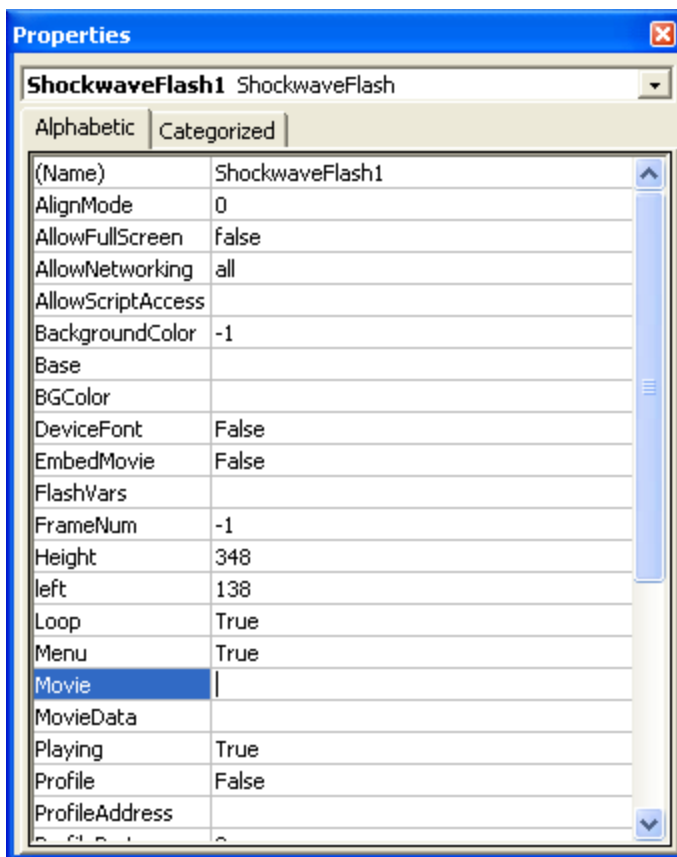


Inserting A YouTube Video into PowerPoint



Take the mouse and drag a rectangle in the area where you would like the video to appear. It will look much like the above.

Right click inside this rectangle and choose **Properties**, and the window you see below will show up



Scroll down to the **Movie** row

Inside the table to the right of Movie paste in the **URL** of the You Tube video

The URL now needs to be edited:

- Delete **watch?**
- Replace = with /

As an example

<http://youtube.com/watch?v=GRj0sLVS-6Y>

will become

<http://youtube.com/v/GRj0sLVS-6Y>

Now when you play your PowerPoint the video should be available and will play when you click on it