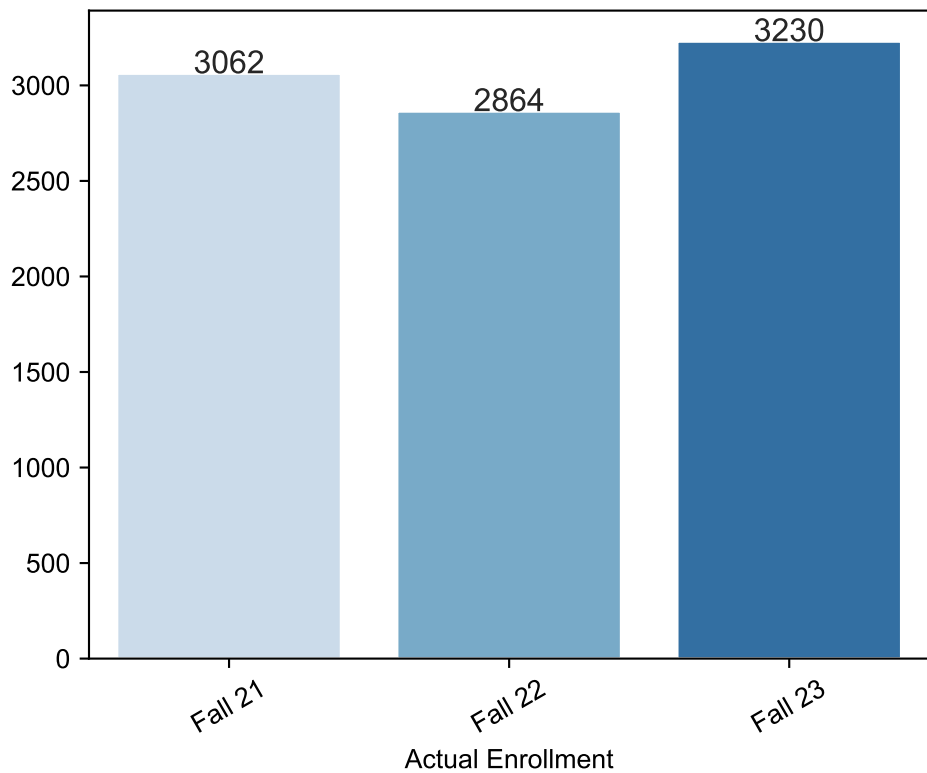
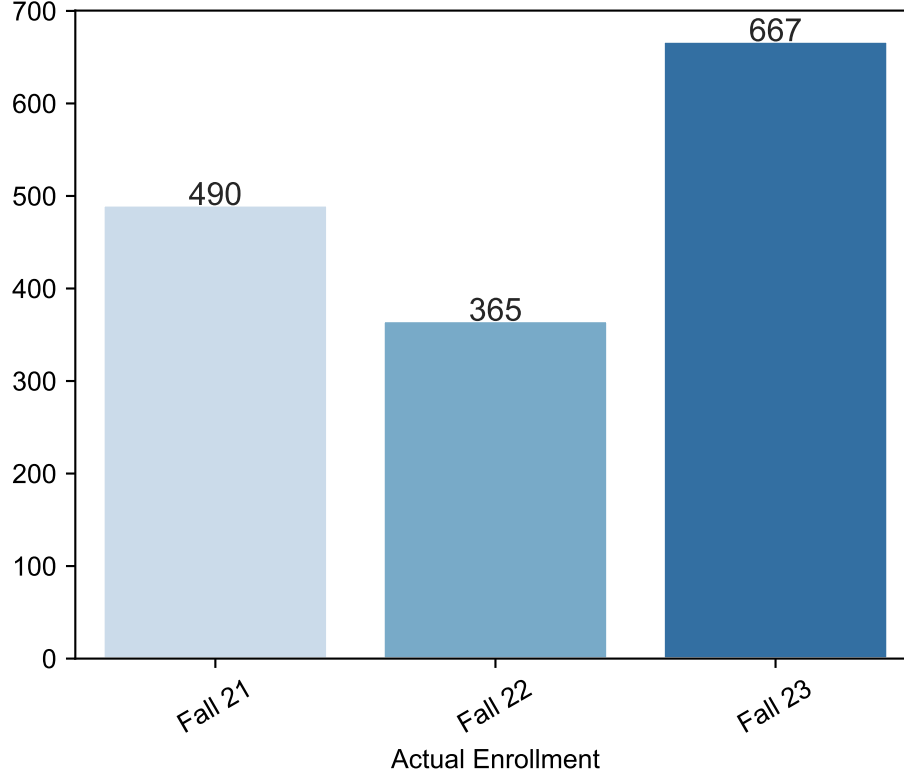


Fall Enrollment Report as of 10/23/2023

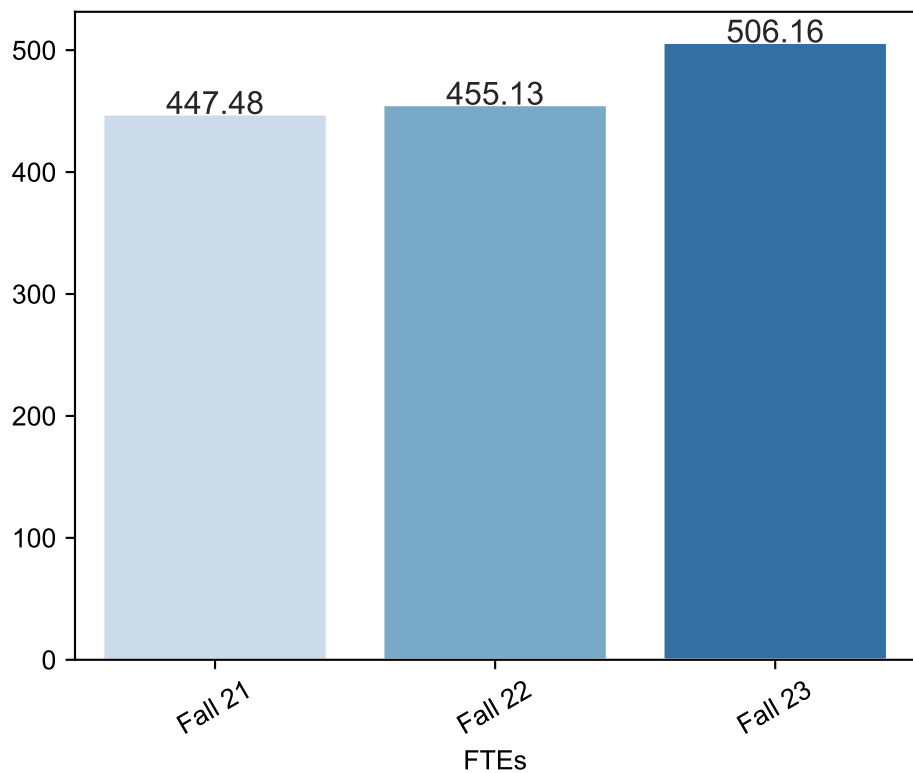
Fall Term: 3 Year Credit Enrollments



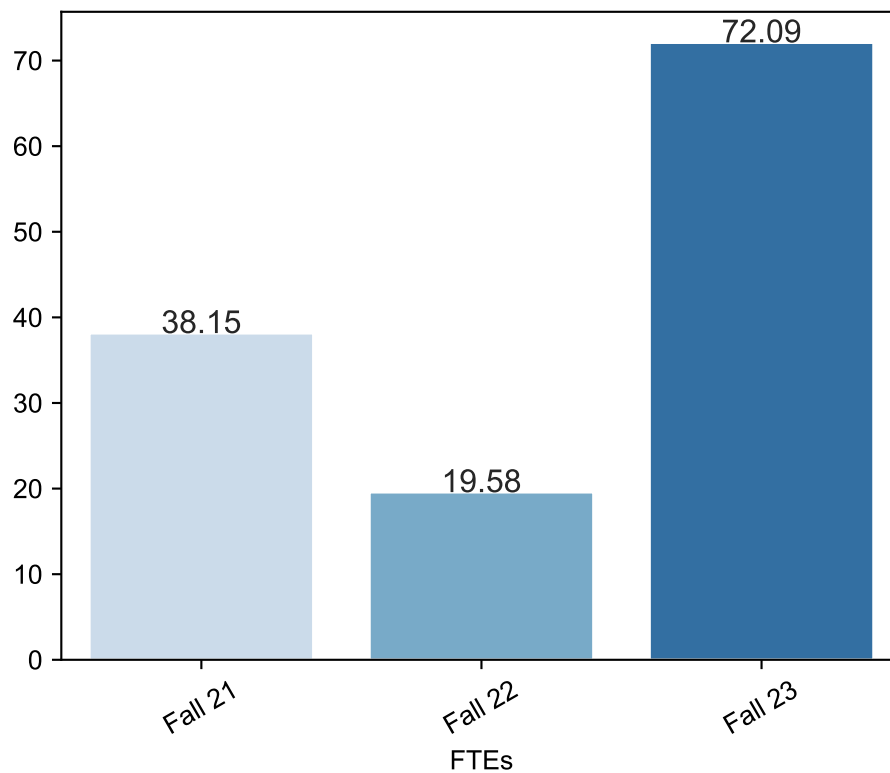
Fall Term: 3 Year Non Credit Enrollments

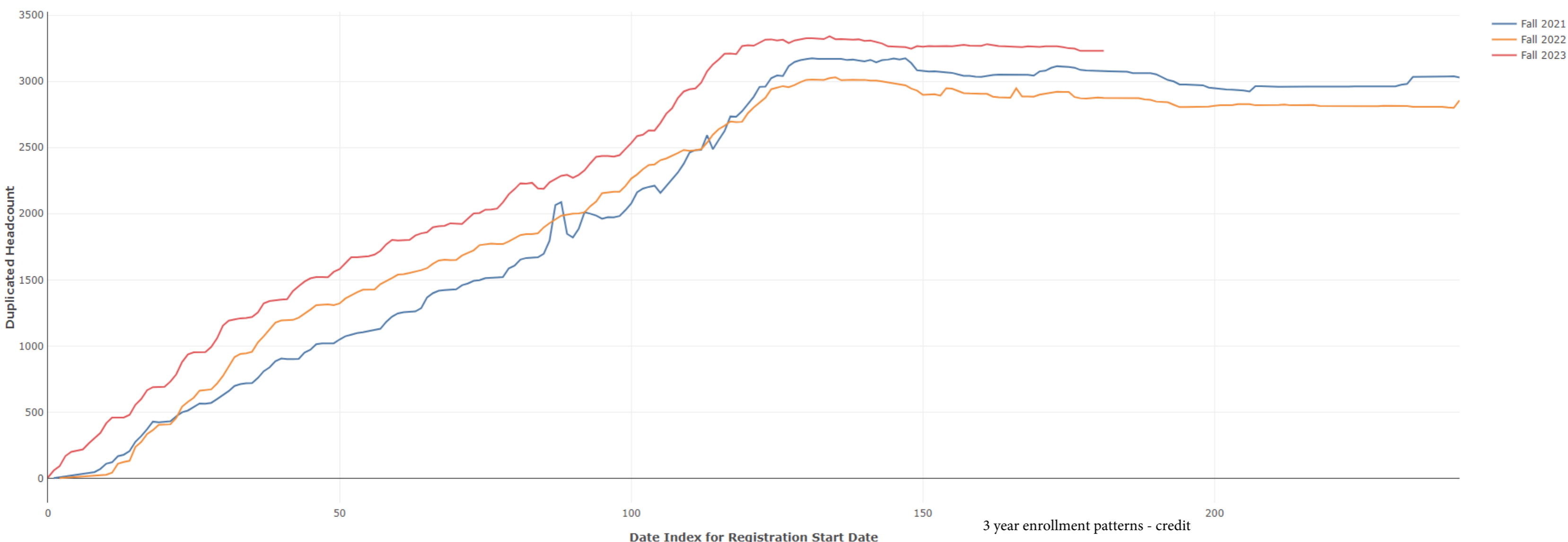


Fall Term: 3 Year Credit FTEs

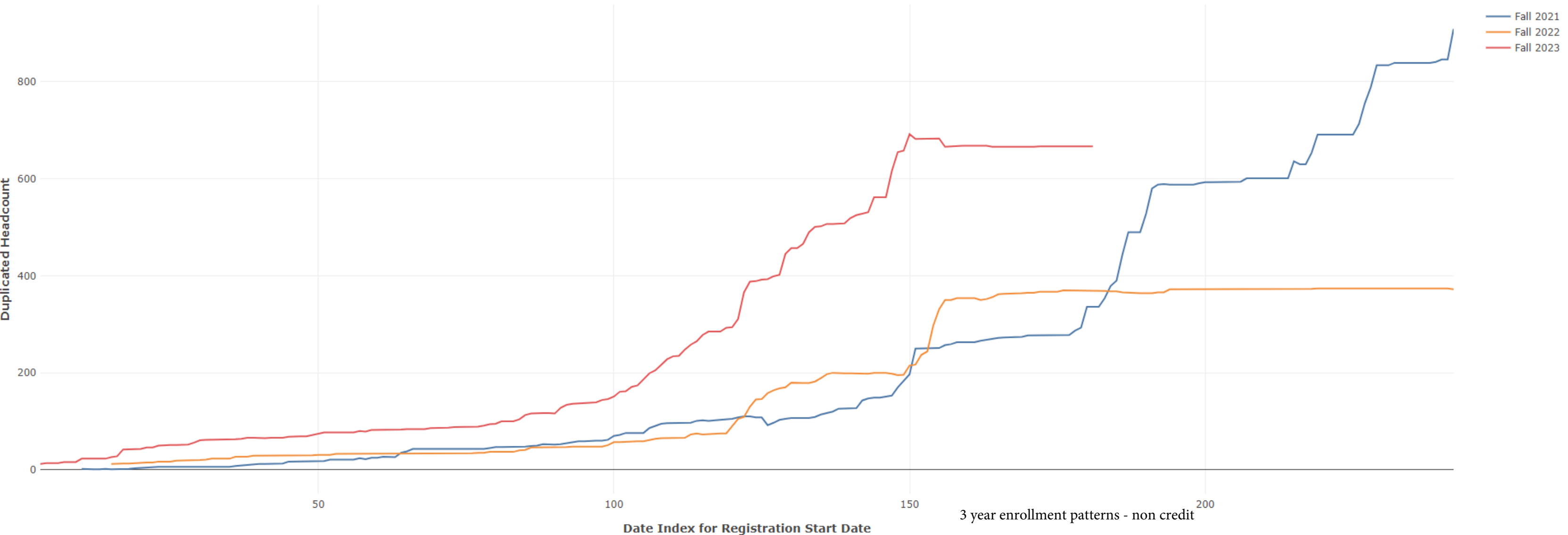


Fall Term: 3 Year Non Credit FTEs





3 year enrollment patterns - credit



3 year enrollment patterns - non credit